

Artikel Nr.: 862183

Netzgerät, Multi CC, PRO-UA420-B Schienensystem 3-Phasen 230V



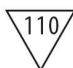








IP20 

Elektrische Daten

Betriebsart	stromkonstant	Eingangsspannung	220-240V AC/50-60Hz
Leistung	6,30-21,00 W	Leistungsfaktor	0,98
Ausgangsspannung	25-42V DC	Anschlußmöglichkeit	Klemme
Ausgangsstrom	250/350/450/500 mA		

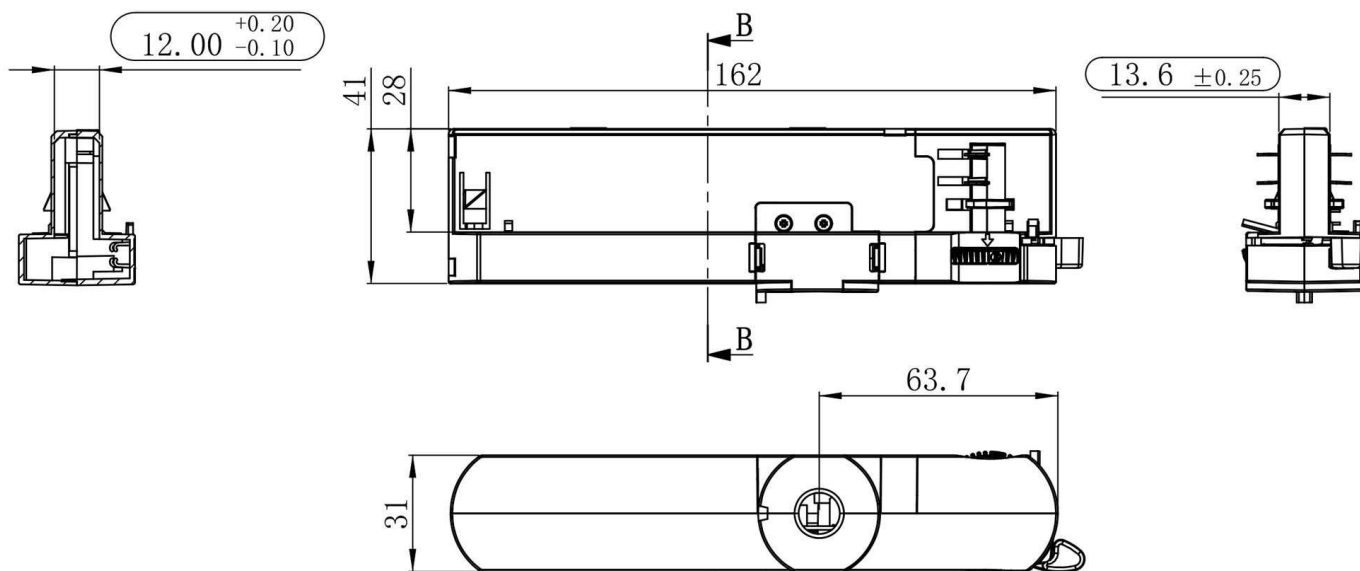
Produkteigenschaften

 Schutzklasse I	 Überspannungsschutz
SELV Schutzkleinspannung	 Lampenbetriebsgerät 110
 Kurzschlußfest	 Möbeleinbau nicht geeignet
 Überlastschutz	ErP Standby-Stromverbrauch < 0,5 W
 Übertemperaturschutz	LVD Sicherheit nach EN 61347
 Sicherheitstrafo	EMC Funkentstörung + Störfestigkeit nach EN 55015 + EN 61547
 nicht dimmbar	EMC Netzstromoberwellen + Flicker nach EN 61000-3-2 + EN 61000-3-3

Schwarze Felder sind zutreffend / graue Felder sind nicht zutreffend

Artikel Nr.: 862183

Netzgerät, Multi CC, PRO-UA420-B Schienensystem 3-Phasen 230V

**Abmessungen und Gewicht****Grenzwerte**

Länge	162,00 mm	Betriebstemperatur	-20°C - +35°C
Breite	31,00 mm	Gehäusetemperatur	75 °C
Höhe	41,00 mm		
Durchmesser	0,00 mm		
Gewicht	100 g		

Article No.: 862183

Power supply unit, Multi CC, PRO-UA420-B Track system 3-Phases 230V



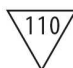








IP20 CE

Electrical Characteristics

Operating mode	constant voltage	Input voltage	220-240V AC/50-60Hz
Power	6,30-21,00 W	Power factor	0,98
Output voltage	25-42V DC	Connection possibility	clamp
Output current	250/350/450/500 mA		

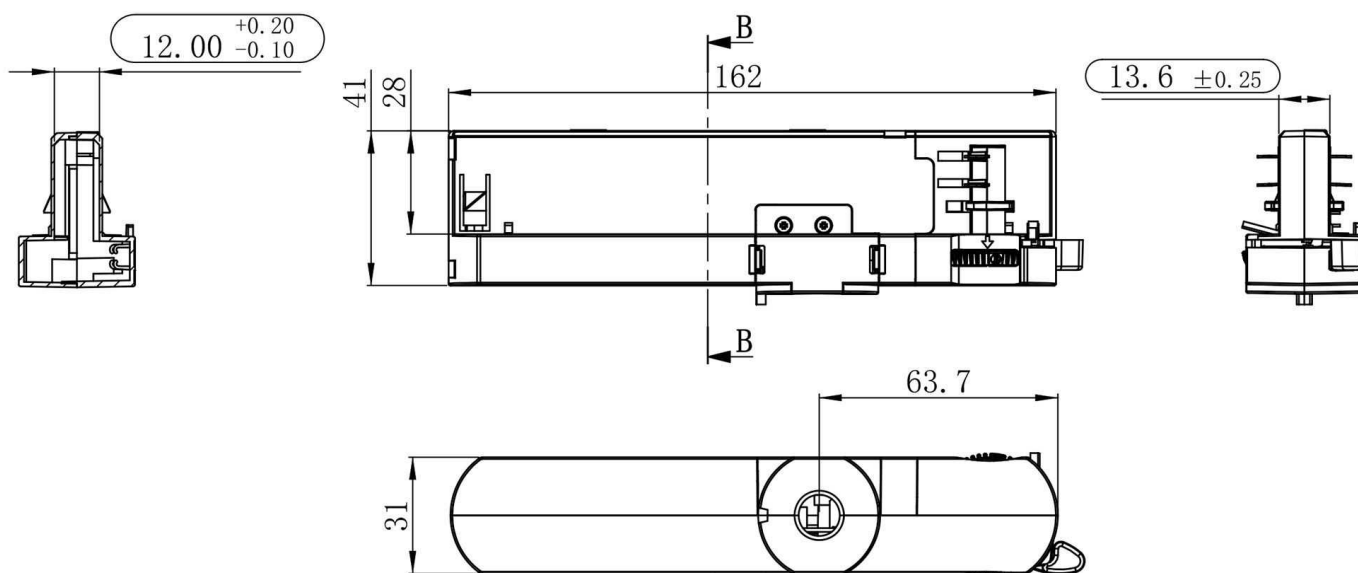
Product features

 Protection class I	 Overvoltage protection
SELV Low voltage protection	 Lamp control gear 110
 Short circuit protection	 Not suitable for furniture installation
 Overload protection	ErP Standby-power consumption < 0,5 W
 Overheating protection	LVD Safety according to EN 61347
 Safety transformer	EMC Interference suppression + immunity according to EN 55015 + EN 61547
 not dimmable	EMC Mains harmonics + flicker according to EN 61000-3-2 + EN 61000-3-3

Black fields are applicable / gray fields are not applicable

Article No.: 862183

Power supply unit, Multi CC, PRO-UA420-B Track system 3-Phases 230V

**Dimensions & Weight****Absolute maximum ratings**

Length	162,00 mm	Operating temperature	-20°C - +35°C
Width	31,00 mm	Case temperature	75 °C
Height	41,00 mm		
Diameter	0,00 mm		
Product weight	100 g		