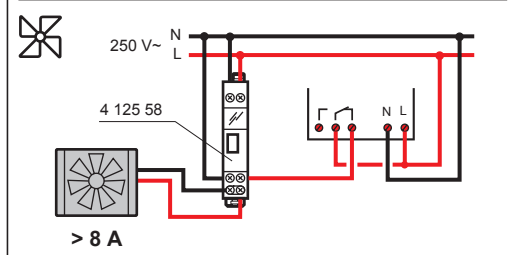
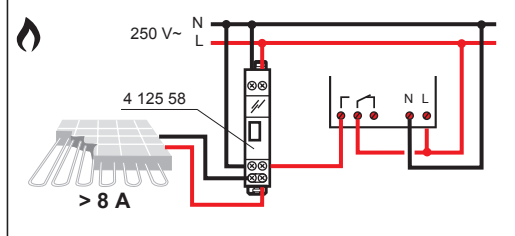
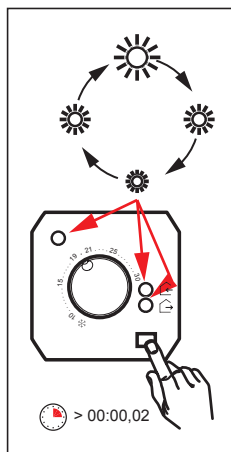
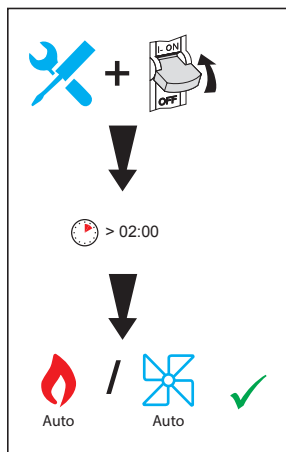
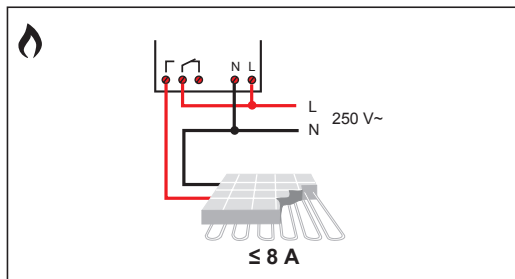
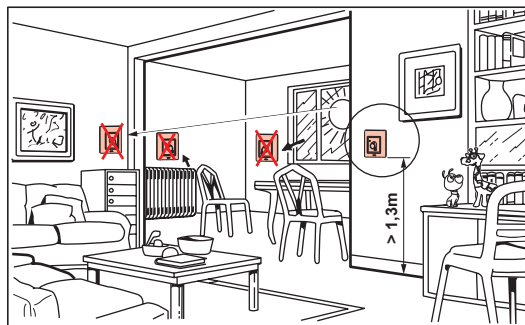
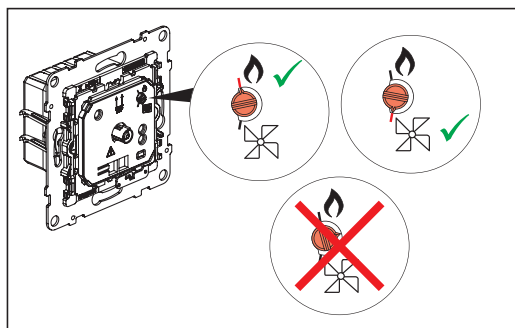
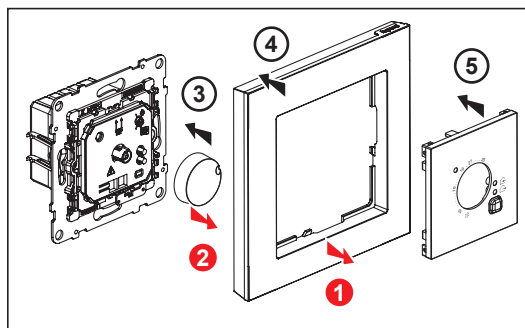
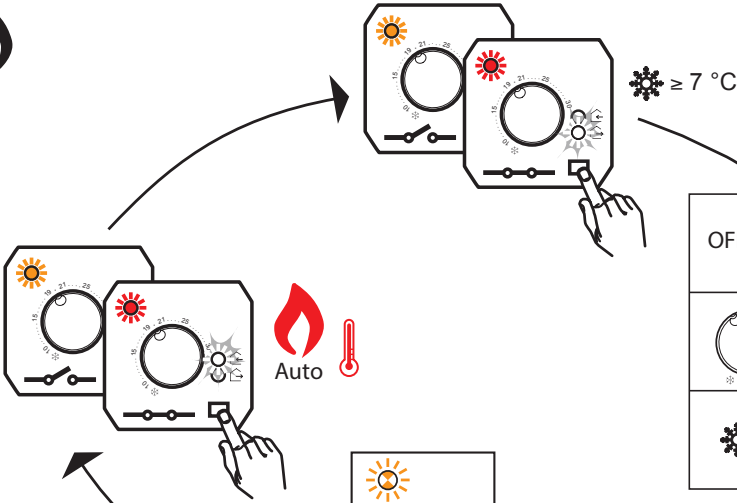
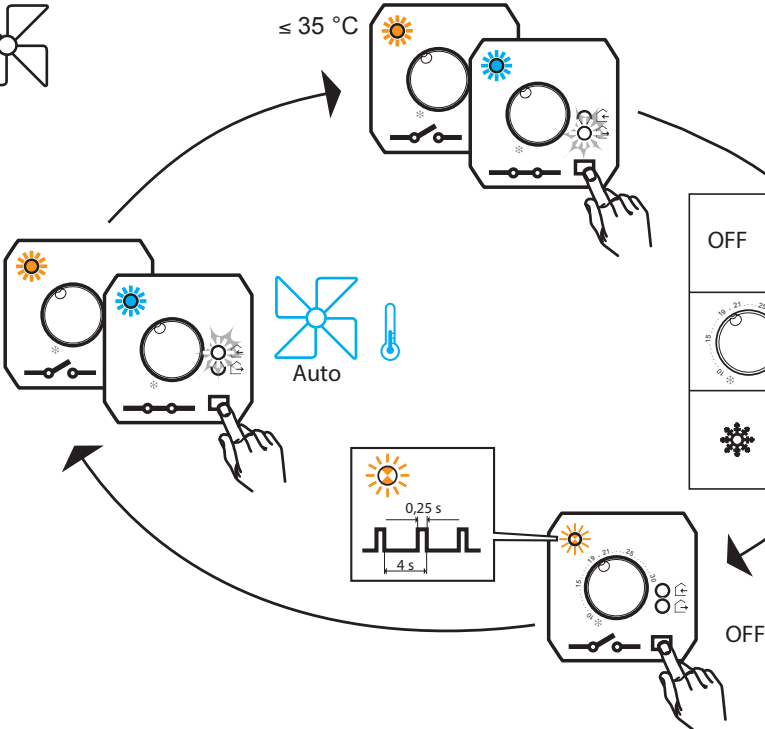
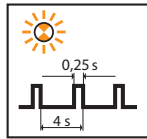


	-10°C ... +70°C	-5°C ... +35°C	 10°C ... 30°C	250 V~ 8 A, cos φ = 1 2 A, cos φ = 0,6	6 mm
	P	U, f			 1,5..4 mm ²
< 1 W	230 V~ 50 / 60 Hz	ΔK = ±2K	 1,5..2,5 mm ²		

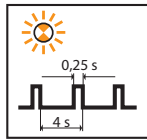


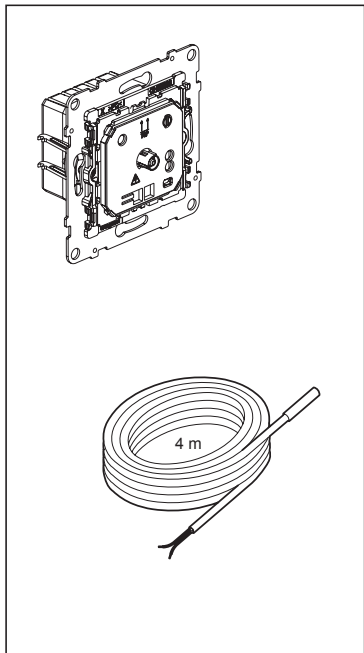


OFF	
7 °C	



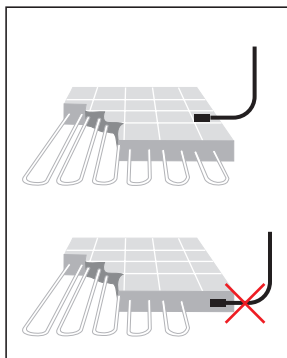
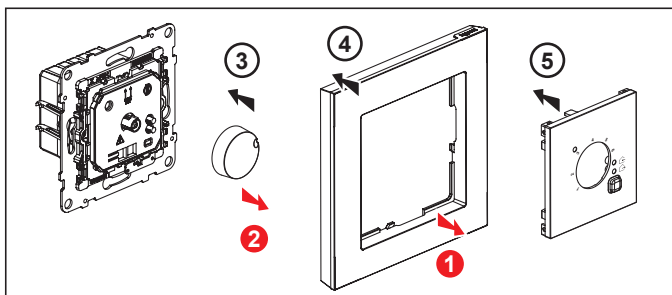
OFF	
7 °C	





			ΔK
-10°C ... +70°C	-5°C ... +35°C	 1...6 (10°C...60°C)	$\pm 2K$

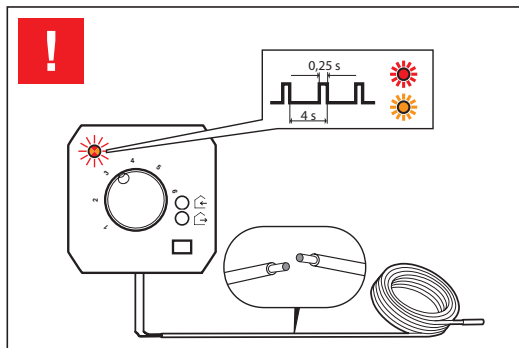
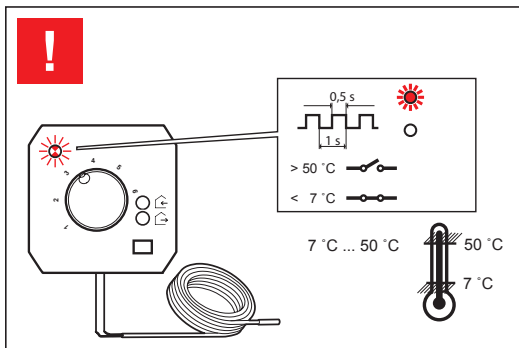
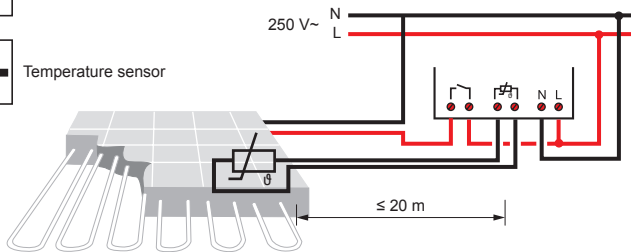
			P	U
$\leq 20\text{ m}$	250 V~ 16 A, $\cos \varphi = 1$	6 mm 1,5, 4 mm ² 1,5, 2,5 mm ²	< 1 W	230 V~ 50 / 60 Hz

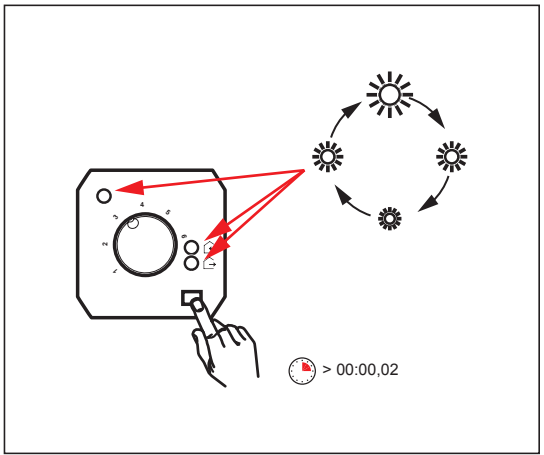
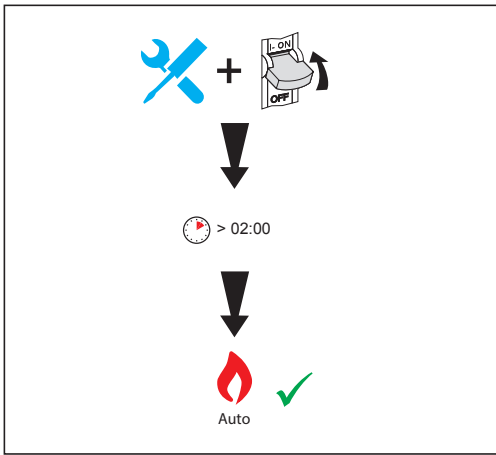


Load



Temperature sensor





OFF	
7 °C	

