

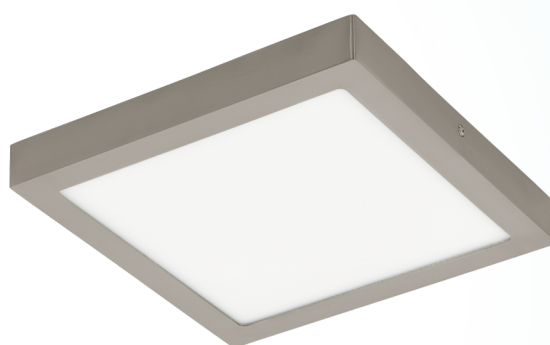
# 33211 FUEVA-C

## General Information

Material number	33211
Type	surface-mounted luminaire
Product segment	Indoor
Theme	EGLO connect

## Dimensions

Article Height (in mm)	40
Article Width (in mm)	300
Article Length (in mm)	300
Net Weight	1.397 Kilogram

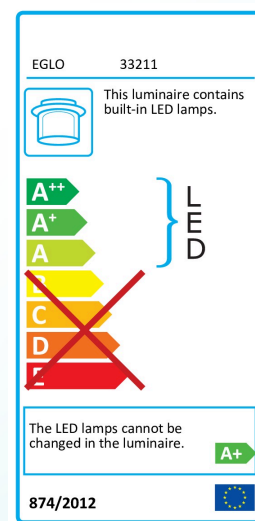


## Material & Colour

Enclosure Material	cast metal
Enclosure Colour	satin nickel
Glass/Shade Material	plastic
Glass/Shade Colour	white

## Functionality

Switch Type	without switch
Function	LED not replaceable control via APP + remote control BLE, CCT, RGB
Battery	No



## Technical Information

Technical changes reserved

Protection Class	2
Mains Voltage	220-240V,50/60Hz
Dimmable	No



## Illuminant 1

Socket Type (1)	LED
Illuminant Type (1)	LED
Illuminant incl. (1)	INCLUSIVE
max. Wattage (1)	21W
Nominal Luminous Flux (in lm)	2700
Equivalence With Incandescent Lamp (W)	163
Colour Temperature	2700-6500K
Nominal Lifetime (in h)	25000
Switching Cycles	15000
Colour Rendering Index (Ra, CRI)	>80
Energy Efficiency Class	LED - A+
Dimmable	No
Function	LED not replaceable control via APP + remote control BLE, CCT, RGB
Rated Lamp Power (0,1W precision)	21
Colour Tolerance (LED, SDCM)	<6

Technical changes reserved



**EGLO Leuchten GmbH**  
Heiligkreuz 22 | 6136 Pöll | Austria

Tel. +43 (0) 5242 / 6996 - 0  
Fax: +43 (0) 5242 / 6996 - 938  
[www.eglo.com](http://www.eglo.com)

my light | my style